



ROYAL HOLLOWAY LIVING CAMPUS TRAIL



CANADA COPSE TRAIL



royalholloway.ac.uk/campus-walks

Woodland Wildlife Walk

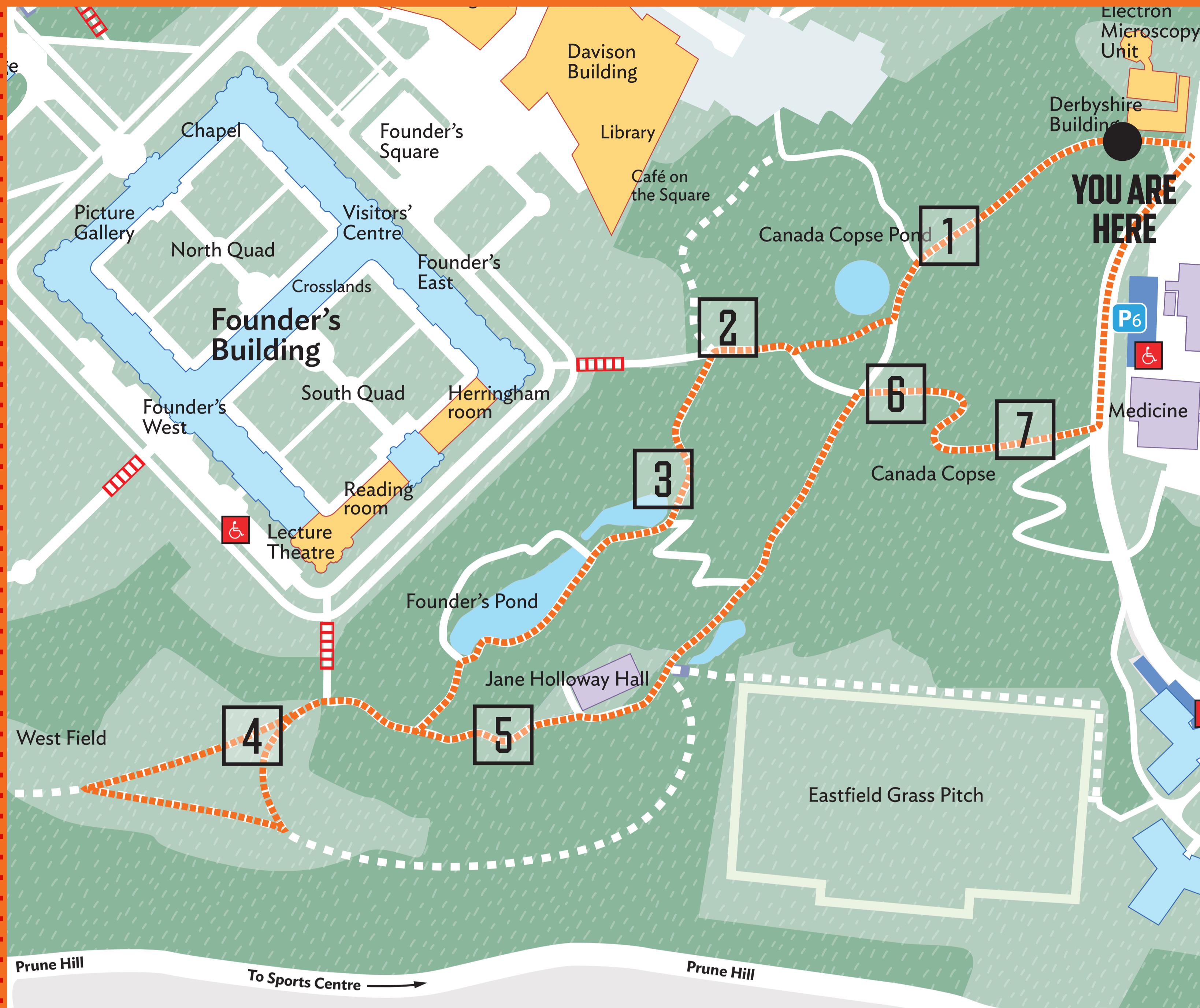
Distance: 1k 1,250 steps

Time: 12 minutes

Level of intensity: Medium

Take a short walk around the beautiful Canada Copse and enjoy the woodland environment.

This route includes areas of incline and paths that may be uneven and need extra care when wet.



1

ROE DEER

Capreolus capreolus



2

GOLDCREST

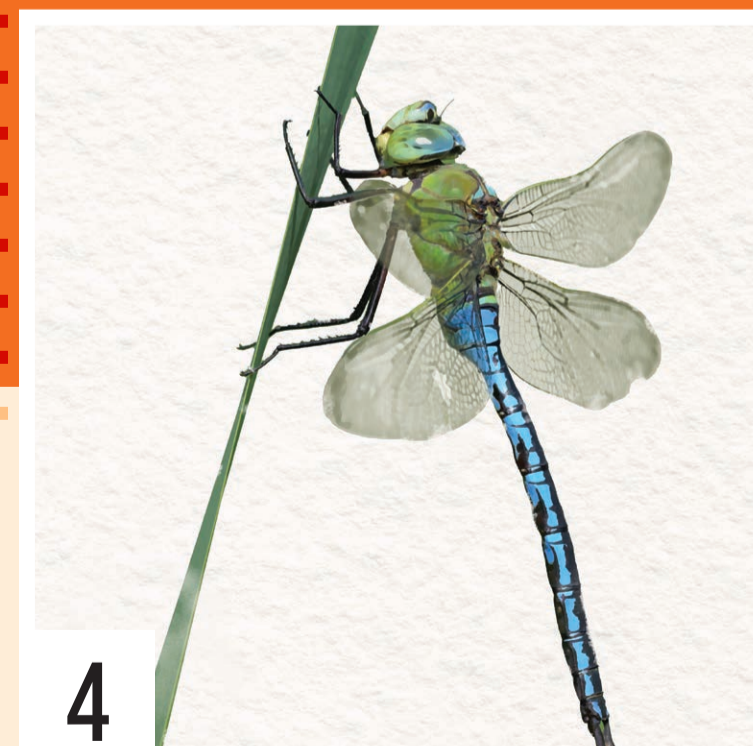
Regulus regulus



3

KINGFISHER

Alcedo atthis



4

EMPEROR DRAGONFLY

Anax imperator



5

TAWNY OWL

Strix aluco



6

BADGER

Meles meles



7

STAG BEETLE

Lucanus cervus

ROYAL HOLLOWAY LIVING CAMPUS TRAIL



1 →

CREATIVE WRITING PROMPT

'Crouch down until the grasses and woodland shrubs are at your eye level. Pay attention to surrounding movements and sounds. Describe your new vantage point.'



ROE DEER

Capreolus capreolus

The roe deer (*Capreolus capreolus*) is one of Britain's native deer species, small and graceful, standing around 60–75 cm tall at the shoulder. In summer their coats are a rich reddish-brown, turning grey-brown in winter. Males, known as bucks, grow short antlers with up to three points, which are shed each autumn and regrown in spring. In May or June, females give birth to fawns that are left hidden in long grass while their mothers feed nearby.



royalholloway.ac.uk/living-campus



ROYAL
HOLLOWAY
UNIVERSITY
OF LONDON

ROYAL HOLLOWAY LIVING CAMPUS TRAIL

The goldcrest (*Regulus regulus*) is the smallest bird in Britain, weighing only about 5–6 grams – lighter than a 20p coin! Despite its tiny size, it is surprisingly hardy and can be found throughout the year, even in the depths of winter.



CANADA COPSE TRAIL

CREATIVE WRITING PROMPT

'Focus on the calls of an individual bird and then shift your attention to the wider chorus. Document what you hear lines and shapes – create a pattern out of birdsong.'

GOLDCREST *Regulus regulus*

Goldcrests are easily recognised by the bright golden-yellow stripe on the top of their head, edged with black. In males, this crest often glows orange in the middle. These miniature birds are insect specialists, they feed on tiny insects, spiders, and caterpillars, often gleaning them from the undersides of leaves or hovering briefly to snatch prey from needles and twigs. Despite its delicate appearance, this nest is strong enough to hold a clutch of up to 12 eggs – one of the largest broods for any British bird.



royalholloway.ac.uk/living-campus



ROYAL
HOLLOWAY
UNIVERSITY
OF LONDON

ROYAL HOLLOWAY LIVING CAMPUS TRAIL

The kingfisher (*Alcedo atthis*) is one of Britain's most striking birds, famous for its dazzling blue and orange plumage. Often seen only as a quick flash over water it is a master hunter of rivers, streams and lakes.



3↑

CREATIVE WRITING PROMPT

'Look toward the pond and identify a reflected colour. Set a timer for five minutes and write continuously without averting your gaze from the water's surface.'



CANADA COPSE TRAIL

KINGFISHER *Alcedo atthis*

Kingfishers feed mainly on small fish, which they catch by diving head first from a perch. Their eyesight is specially adapted for hunting underwater, with the ability to judge depth and see clearly even through the surface glare.

Nesting takes place in tunnels dug into sandy riverbanks, where the female lays up to seven glossy white eggs. Both parents work hard to feed the chicks, making hundreds of fishing trips each day.



royalholloway.ac.uk/living-campus



ROYAL
HOLLOWAY
UNIVERSITY
OF LONDON

ROYAL HOLLOWAY LIVING CAMPUS TRAIL

The emperor dragonfly (*Anax imperator*) is the largest dragonfly in Britain, with a wingspan of up to 10 cm. It is a striking insect: males are bright blue with a green thorax, while females are mainly green. Fast and powerful, they are often seen patrolling ponds, lakes, and meadows on warm summer days.



4C

CREATIVE WRITING PROMPT

'Look for an insect in flight. Draw a multidirectional line mapping the insect's journey. Can you keep pace? Describe your line without referring to the insect or meadow.'



CANADA COPSE TRAIL

EMPEROR DRAGONFLY

Anax imperator

Emperors are skilled hunters. They catch flies, butterflies, and even smaller dragonflies in mid-air, using their legs like a net. Females lay their eggs in floating or submerged plants. The young, known as nymphs, live underwater for up to two years, feeding on tadpoles, insect larvae, and even small fish before climbing out to transform into adults.



royalholloway.ac.uk/living-campus



ROYAL
HOLLOWAY
UNIVERSITY
OF LONDON

ROYAL HOLLOWAY LIVING CAMPUS TRAIL

The tawny owl (*Strix aluco*) is the most common and widespread owl in Britain, famous for its haunting “twit-twoo” call at night. Medium-sized, with rounded wings and a large round head, it has mottled brown plumage that provides perfect camouflage against tree bark.



5↑

CREATIVE WRITING PROMPT

‘Take a crayon rubbing on bark from a nearby tree – closely observe your collected texture. Does it remind you of an emotion, a sound, an object?’



TAWNY OWL

Strix aluco

Tawny owls usually nest in tree holes, old buildings, or nest boxes. The female lays two-three eggs in spring and the fluffy chicks can often be heard calling for food at night.

Secretive and largely nocturnal, tawny owls are more often heard than seen, yet their eerie calls are an iconic sound of British woodlands.

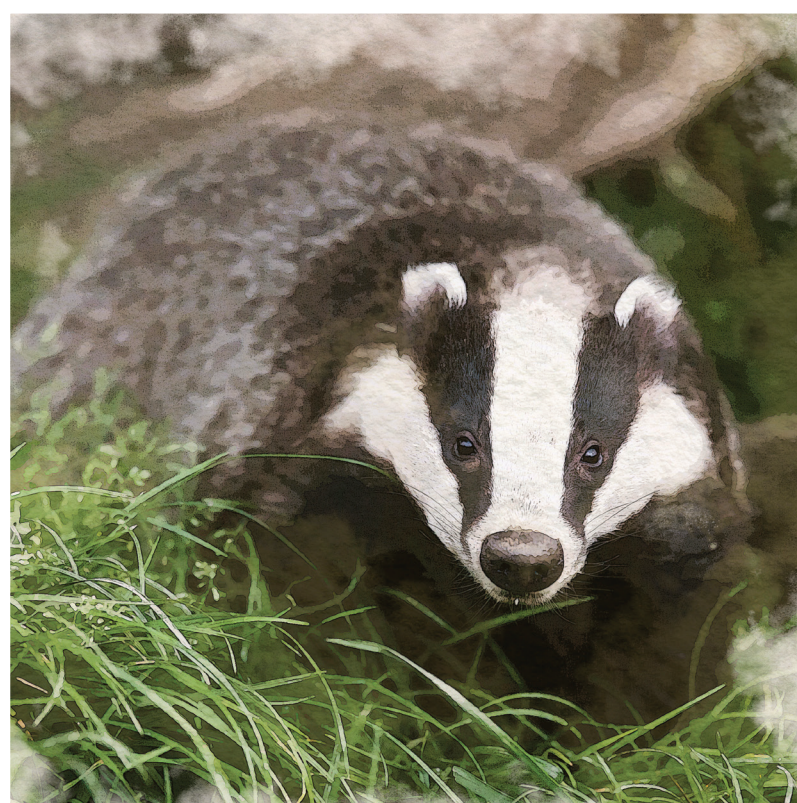


royalholloway.ac.uk/living-campus



ROYAL HOLLOWAY LIVING CAMPUS TRAIL

The European badger (*Meles meles*) is one of the UK's most familiar mammals, easily recognised by its bold black-and-white striped face. Stocky and powerful, with short legs and strong claws, badgers are expert diggers and live in underground homes called setts. Some setts are centuries old and used by many generations.



CREATIVE WRITING PROMPT

'Focus on the earth beneath your feet. Sketch a speculative map of root systems, fungi networks, warrens, and setts.'



CANADA COPSE TRAIL

BADGER *Meles meles*

Badgers are mostly nocturnal, emerging at dusk to forage. They eat fruit, insects, roots, and small mammals, making them important in balancing ecosystems.

Badgers live in family groups, known as clans, sharing their sett and keeping it clean by lining chambers with dry grass and leaves. In spring, badger cubs can sometimes be seen playing at the sett entrance.



royalholloway.ac.uk/living-campus



ROYAL HOLLOWAY LIVING CAMPUS TRAIL

The stag beetle (*Lucanus cervus*) is the largest beetle in Britain, with males growing up to 7 cm long. They are named after the male's impressive antler-like jaws, which are not used for biting but for wrestling rivals during the summer mating season.



CREATIVE WRITING PROMPT

'Closely observe an insect navigating the soil and grasses. Continue your route whilst mirroring the insect's pacing, meanders, and pathways. Has your relationship with the woodland changed?'



CANADA COPSE TRAIL

STAG BEETLE

Lucanus cervus

Stag beetles spend most of their lives underground as larvae, feeding on rotting wood from six to eight years. When fully grown, they pupate and finally emerge as adults, living only a few short weeks to breed.

Warm summer evenings are the best time to spot males flying clumsily in search of females. Despite their fearsome appearance, stag beetles are harmless to people and play an important role in recycling nutrients by breaking down dead wood.



royalholloway.ac.uk/living-campus

