

# ROYAL HOLLOWAY LIVING CAMPUS TRAIL



## ARBORETUM TRAIL



[royalholloway.ac.uk/campus-walks](http://royalholloway.ac.uk/campus-walks)

### Arboretum Walk

**Distance:** 1k 1,250 steps

**Time:** 12 minutes

**Level of intensity:** Medium

Discover the Arboretum which has a modest selection of trees from across the world.

This route includes areas of incline and paths that may be uneven and need extra care when wet.



**1 INDIAN BEAN TREE**  
*Catalpa bignonioides*



**2 ENGLISH OAK**  
*Quercus robur*



**3 INDIAN HORSE CHESTNUT**  
*Ascelus indica*



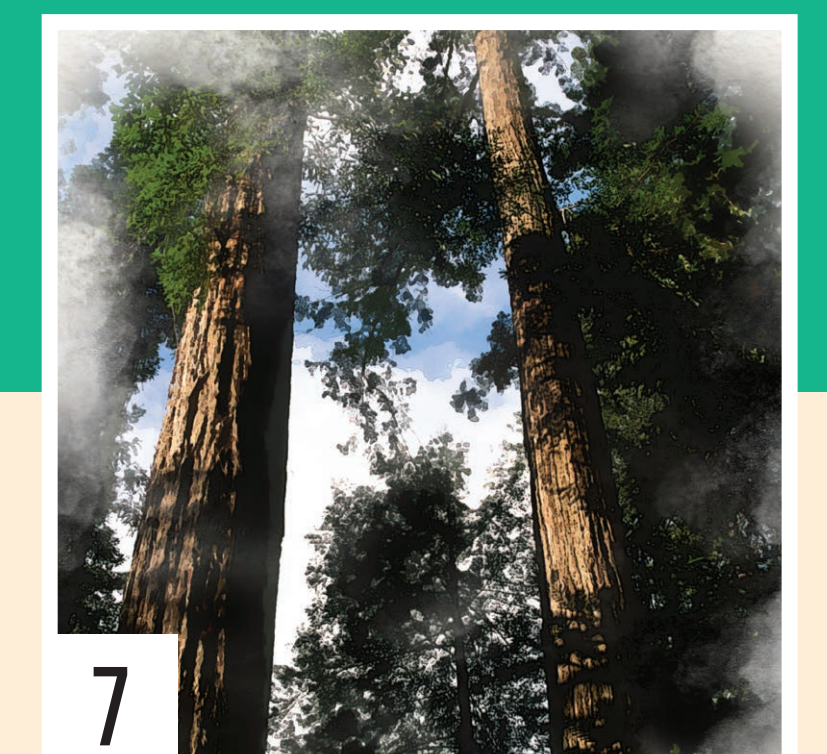
**4 MAIDENHAIR TREE**  
*Ginkgo biloba*



**5 CORK OAK**  
*Quercus suber*



**6 WESTERN RED CEDAR**  
*Thuja plicata*



**7 COASTAL REDWOOD**  
*Sequoia sempervirens*

# ROYAL HOLLOWAY LIVING CAMPUS TRAIL



1↑

## CREATIVE WRITING PROMPT

'Close your eyes and listen closely to the world around you. Tune in to the rhythms of wind and birdsong. Make a record of unexpected sounds and disruptions.'



## INDIAN BEAN TREE

*Catalpa bignonioides*

Originating from Southern America, this tree is a beautiful broad forming tree with large, heart shaped leaves. It creates panicles of white flowers in late summer followed by long bean shaped inedible fruits (that aren't actually beans).



[royalholloway.ac.uk/campus-walks](https://royalholloway.ac.uk/campus-walks)



ROYAL  
HOLLOWAY  
UNIVERSITY  
OF LONDON

# ROYAL HOLLOWAY LIVING CAMPUS TRAIL



## CREATIVE WRITING PROMPT

'Run your hand over the ridges and furrows of the oak's trunk. This bark connects you to roosting bats, hatching moths, and lichen. Write a message for your new community.'



## ENGLISH OAK *Quercus robur*

This is our native oak, and this individual is nearing its ancient stages. Oaks can provide for a huge range of wildlife estimated to support up to 2,300 species. An important part of their life cycle allows them to 'grow down,' eventually turning into shorter, girthy hollowed specimens.

Oak trees can support some of the rarest species in the UK and are incredibly important to biodiversity conservation. The oak in front of you is the oldest native oak on our Egham campus, and is found on maps that predate the Founder's building.



[royalholloway.ac.uk/campus-walks](https://royalholloway.ac.uk/campus-walks)



ROYAL  
HOLLOWAY  
UNIVERSITY  
OF LONDON

# ROYAL HOLLOWAY LIVING CAMPUS TRAIL



3 ←

## CREATIVE WRITING PROMPT

'Walk around the tree and collect two pieces of fallen debris from the ground. Hold an object in the palm of each hand. Make a list of tactile perceptions.'



## INDIAN HORSE CHESTNUT

*Asclelus indica*

A beautiful resilient chestnut, now coping better than the traditional horse chestnut. In early summer it bears panicles of white flowers. Each individual flower is colour coded to help pollinators know which have already been pollinated red means pollinated, yellow means come on in.

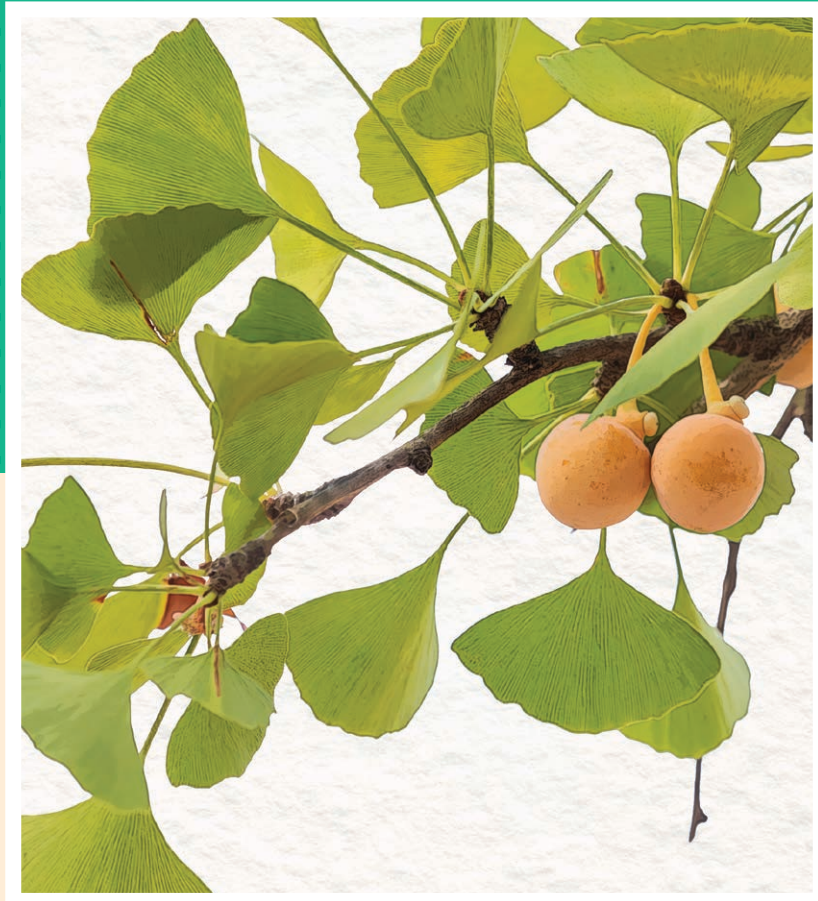


[royalholloway.ac.uk/campus-walks](https://royalholloway.ac.uk/campus-walks)



ROYAL  
HOLLOWAY  
UNIVERSITY  
OF LONDON

# ROYAL HOLLOWAY LIVING CAMPUS TRAIL



4 ←

## CREATIVE WRITING PROMPT

'Choose a leaf. Trace its outline with a pencil and repeat until your page is full of fans, lobes, and notched edges.'



## MAIDENHAIR TREE

*Ginkgo biloba*

Ginkgo trees are famously tough – some were among the few living things to survive the atomic bombing of Hiroshima in 1945. For centuries, extracts from Ginkgo leaves have been used in traditional medicine, believed to improve memory and circulation. They even produce separate male and female trees. Female trees grow seeds with a strong smell – sometimes compared to rancid butter!



[royalholloway.ac.uk/campus-walks](https://royalholloway.ac.uk/campus-walks)



# ROYAL HOLLOWAY LIVING CAMPUS TRAIL



5↑

## CREATIVE WRITING PROMPT

'Photograph the cracked surface of the bark. Imagine that your image is a topographic map. How would you navigate the terrain? Describe a journey across your new landscape.'



## CORK OAK

*Quercus suber*

A Mediterranean tree that is doing remarkably well in the UK climate. The specimen in front of you is a very well formed example. These trees have a fascinating adaptation for fire protection - they grow unusually thick bark which can be harvested without killing the tree. In the Mediterranean, these trees are worked to harvest cork for wine bottles and other products.



[royalholloway.ac.uk/campus-walks](https://royalholloway.ac.uk/campus-walks)



# ROYAL HOLLOWAY LIVING CAMPUS TRAIL



## CREATIVE WRITING PROMPT

'Rub the foliage between your fingers. Does the scent remind you of a place, a person, an experience? Set a timer for three minutes and write about the memory.'



## WESTERN RED CEDAR

*Thuja plicata*

This tree can reach up to 65 metres tall and live to be over 1000 years old. It is native to the western regions of North America and is estimated to have been introduced to the UK in the 1850's. It is a very fragrant tree, if you break a small tip of the foliage and rub it between your fingers, you will smell citrus and pineapple.



[royalholloway.ac.uk/campus-walks](https://royalholloway.ac.uk/campus-walks)



ROYAL  
HOLLOWAY  
UNIVERSITY  
OF LONDON

# ROYAL HOLLOWAY LIVING CAMPUS TRAIL



7↑

## CREATIVE WRITING PROMPT

'Stand with your back pressed against the trunk and look upwards. Imagine that the moving branches and shadows are performing a dance. Describe the accompanying music.'



## COASTAL REDWOOD

*Sequoia sempervirens*

This is classed as an endangered tree by the International Union for Conservation of Nature (IUCN.) Originating from the coasts of California, where this species can grow to 110 meters, it is one of the tallest trees on Earth. Their thick, soft bark is specially adapted to protect them from fires, and their leaves are adapted to capture and absorb mist from the air.

Redwoods are especially good at capturing carbon due to their huge biomass.



[royalholloway.ac.uk/campus-walks](https://royalholloway.ac.uk/campus-walks)



ROYAL  
HOLLOWAY  
UNIVERSITY  
OF LONDON