



YOUR WEDDING AT ROYAL HOLLOWAY



“

It was such an amazing day. The team worked tirelessly to make the day exactly as we wanted. Nothing was too much to ask for and every detail was taken care of with precision. The venue is beyond beautiful!

”



Cover images supplied by Copland-Cale Photography and Juliet Lemon Photography

Image supplied by kitmyersphotography.co.uk

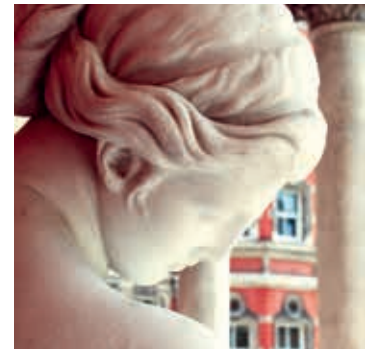


Image supplied by Sofie Hughes Photography



LEFT

The impressive Grade 1 listed Founder's Building

TOP LEFT AND RIGHT

Royal Holloway is home to some exquisite architecture

BOTTOM LEFT

A romantic moment in the original Victorian library

BOTTOM RIGHT

The stately quadrangles are perfect for drinks receptions and photo opportunities

WELCOME TO ROYAL HOLLOWAY

Royal Holloway is a stunning example of Victorian architecture. Set amongst 135 acres of beautiful parkland in Egham, Surrey, it is the perfect venue for a wedding.

As you enter the grounds, you are greeted by the Grade 1 listed Founder's Building. Grand, spectacular and steeped in history, The Founder's Building possesses a plethora of original details and features, including the Picture Gallery and the original Victorian Dining Hall.

Built around two quadrangles, this iconic building is widely recognised as one of the most spectacular university buildings in the world and it is sure to create a lasting impression on all those who visit.



Image supplied by Copland-Cale Photography



LEFT

The spectacular Picture Gallery is the perfect space for a civil ceremony

ABOVE LEFT

Say your vows surrounded by some truly illustrious paintings

ABOVE RIGHT

A wedding breakfast in the elegant Founder's Dining Hall

OUR FUNCTION ROOMS

Royal Holloway has three lavish and impressive spaces, licensed to hold civil ceremonies and partnerships as well as wedding receptions.

THE PICTURE GALLERY

The Picture Gallery is the perfect space for your civil ceremony or wedding breakfast. Housing one of the country's finest private collections of Victorian art, the Picture Gallery can accommodate up to 120 seated guests.

THE FOUNDER'S DINING HALL

Classic, elegant and spacious, The Founder's Dining Hall – with its high ceilings and subtle décor – is a wonderful and romantic civil ceremony, wedding breakfast or reception space and can host up to 200 guests.

THE CROSSLAND SUITE

Our Crossland Suite is a fantastic space for couples looking for an intimate celebration with a modern feel, within the glorious Founder's Building. Used most frequently as an evening reception venue, it can accommodate up to 120 guests.

THE QUADRANGLES

The beautiful quadrangles offer a fantastic outside space that can be used in conjunction with our indoor function rooms. They are ideally suited for drinks receptions while the Founder's Building offers the perfect backdrop for your photographs.

“You looked after us fantastically from start to finish and we had a superb day. The building and reception rooms are absolutely beautiful and have a real wow factor.”



Image supplied by www.amikulich.co.uk



Image supplied by Copland-Cale Photography



Image supplied by Balance Photography



Image supplied by Charlwood Photography



ABOVE LEFT

The table set ready in the Picture Gallery

ABOVE RIGHT

A civil ceremony in the classic and spacious Founder's Dining Hall

OUR COMBINED CIVIL CEREMONY AND RECEPTION PACKAGE

You can choose to host your ceremony and your wedding breakfast in either our historic Picture Gallery or in the elegant Founder's Dining Hall.

Please note that we only host civil ceremonies in conjunction with your wedding breakfast and all of our packages cater for a minimum of 80 adult guests.

“ Our guests were amazed at the beautiful chapel, the historic Picture Gallery and the wonderful architecture of the buildings and grounds. The wedding breakfast was presented beautifully and everyone was served quickly and efficiently. Many of our guests have commented that it was the best wedding they have ever been to. ”



Image supplied by Olivia Marocco photography.



ABOVE LEFT

The Founder's Building and south quadrangle

ABOVE RIGHT

Royal Holloway's extensive parkland provides plenty of romantic photo opportunities

OUR RECEPTION ONLY PACKAGE

Enjoy your wedding breakfast in the grandeur of our renowned Picture Gallery, followed by an evening reception in the contemporary Crossland Suite. Alternatively, make the most of our spacious and subtly decorated Founder's Dining Hall with a sumptuous meal followed by an evening party, all in the same place.

“ The setting is absolutely stunning. Not only was the venue amazing but so were the team of staff who helped us in the lead up to the day and on the day itself. Thank you so much for all your help – we would highly recommend Royal Holloway as a venue for a wedding or any other occasion! ”



Image supplied by www.amikulich.co.uk



Image supplied by Juliet Lemon Photography



Images supplied by kitmyersphotography.co.uk



LEFT

The impressive Founder's Building provides a fitting backdrop for your wedding day

ABOVE LEFT

A range of delicious canapés can be provided at the reception

ABOVE RIGHT

The table set for a wedding breakfast

OUR FOOD

Our talented kitchen team takes great pride in creating dishes that not only look fabulous but taste good too.

Our menus change regularly to reflect the seasonal produce available, which guarantees that the freshest and highest quality of ingredients are used in every dish.

A menu tasting a few months prior to your wedding ensures you have exactly what you want for your big day.

OUR ACCOMMODATION

We are able to offer comfortable, five-star campus rated, single, double and family bedrooms.

Our dedicated weddings coordinator can help you to organise accommodation so that your guests can have a great night's sleep before the big day as well as after the party.



Image supplied by kitmyersphotography.co.uk



ABOVE

A romantic moment on the steps of The Founder's Building

RIGHT

Under the beautiful archway of the Founder's Building Clock Tower

OUR DEDICATED TEAM

The picture perfect setting at Royal Holloway is matched by the warmth and welcoming nature of our staff. From your initial enquiry, our experienced and dedicated wedding coordinator will work with you to create the memorable day you have always imagined.

They will be on hand throughout the organisation of your wedding to offer advice, guidance and support, and their friendly and professional manner will leave you relaxed and free to enjoy your day.



“

All of our guests were absolutely stunned by the surroundings and atmosphere of the Founder's Building venue. We have had so many compliments on the way in which the event flowed so seamlessly throughout the afternoon and evening, and also on our choice of menu and quality of the Wedding Breakfast.

”

Royal Holloway, Egham, Surrey, TW20 0EX

T: 01784 443045 E: sales-office@royalholloway.ac.uk
www.weddings.royalholloway.ac.uk

[f /royalhollowayweddings](https://www.facebook.com/royalhollowayweddings) [@rhulweddings](https://twitter.com/rhulweddings)

